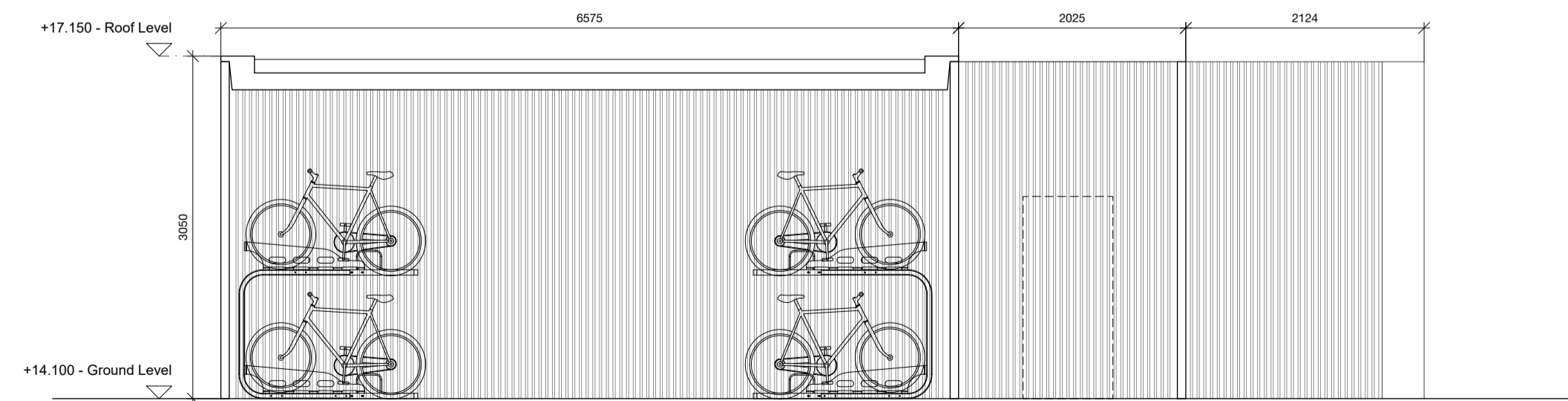
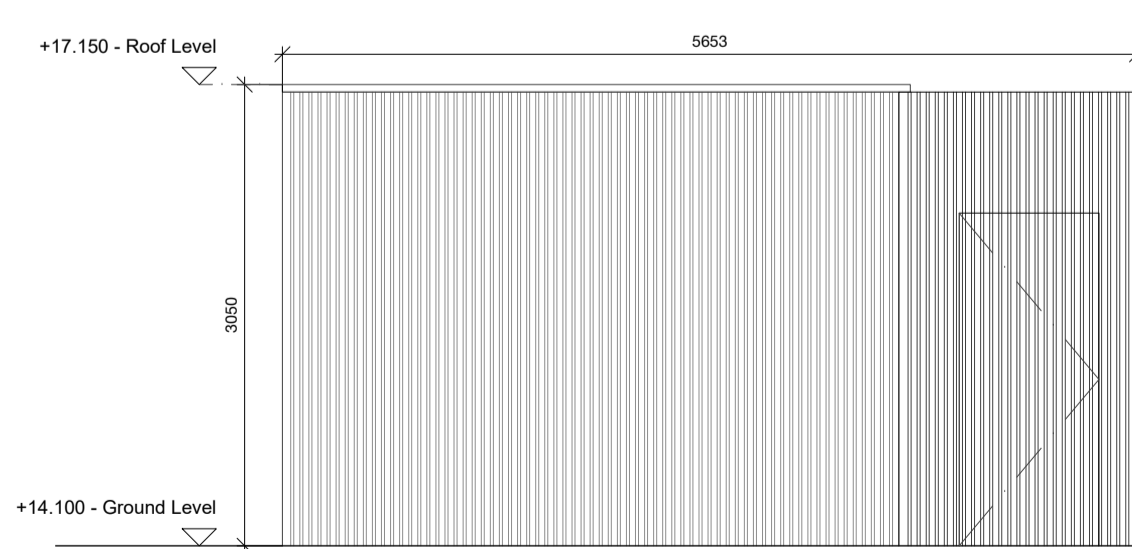
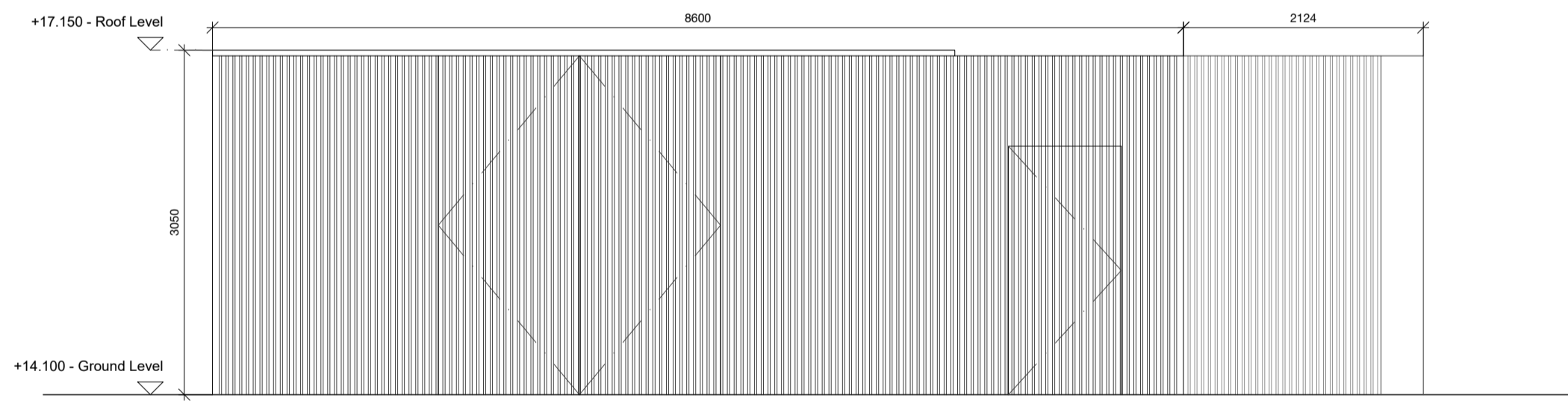
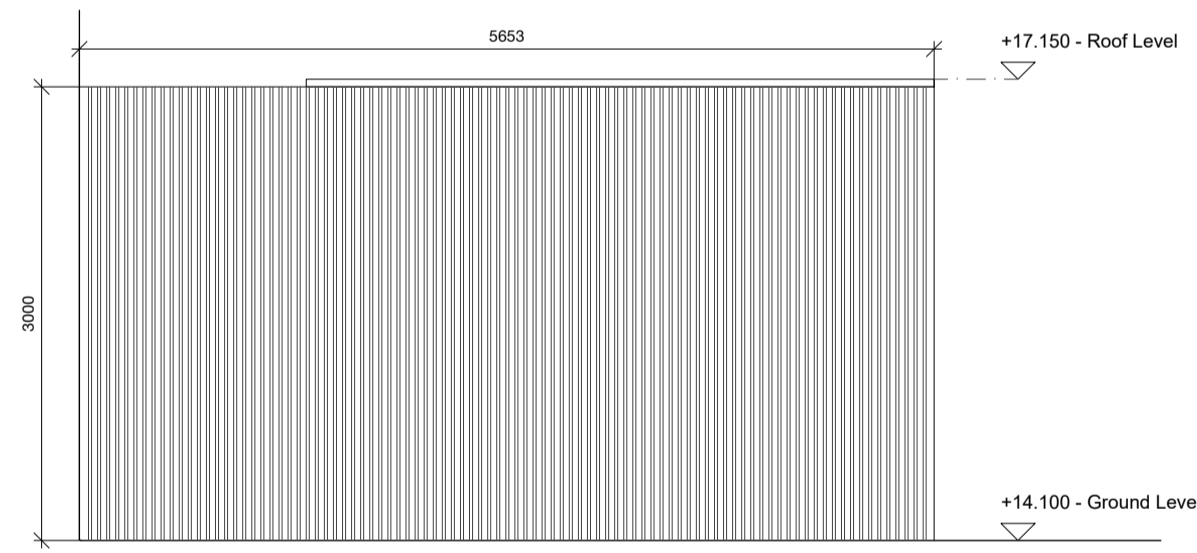
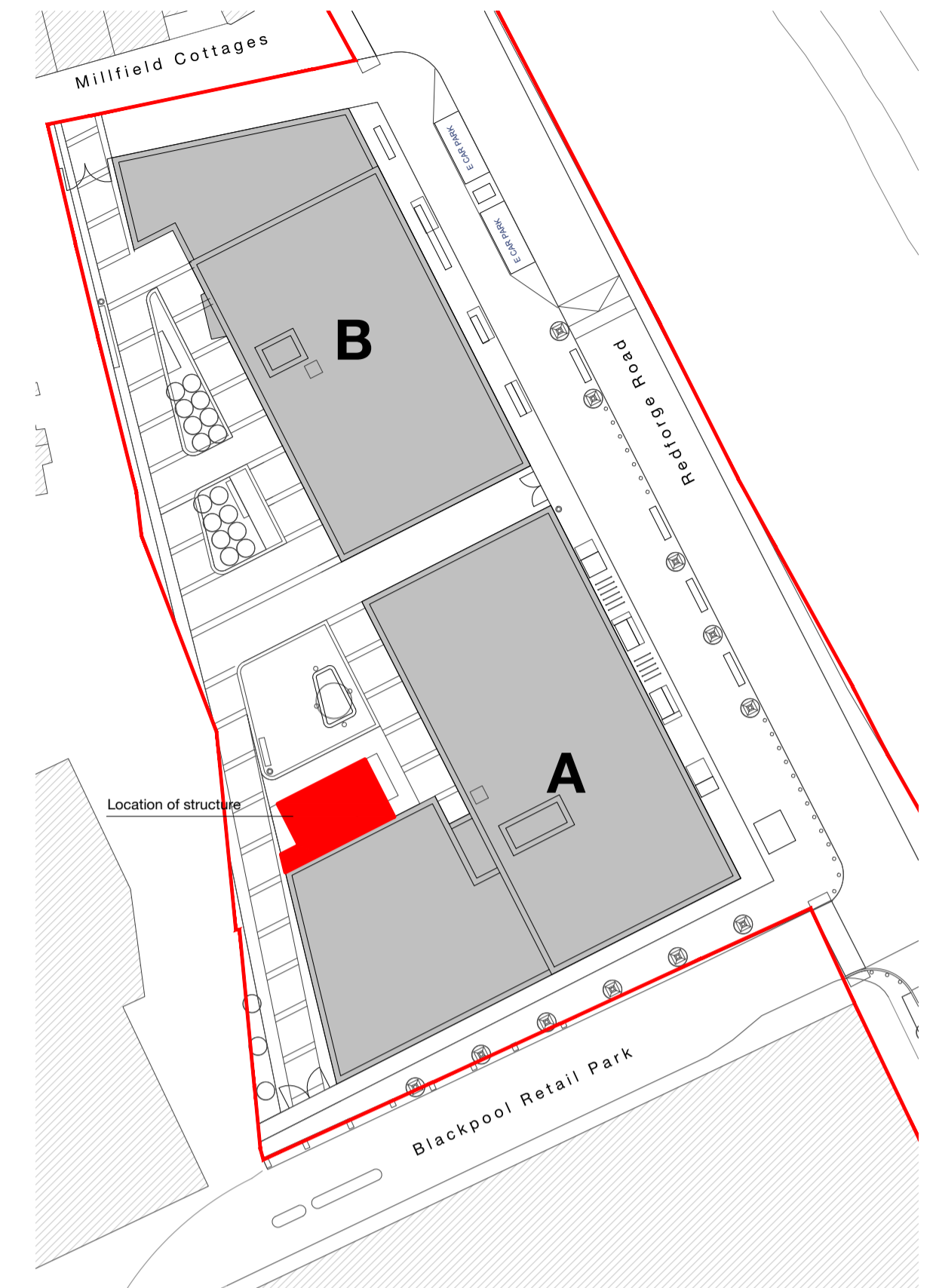
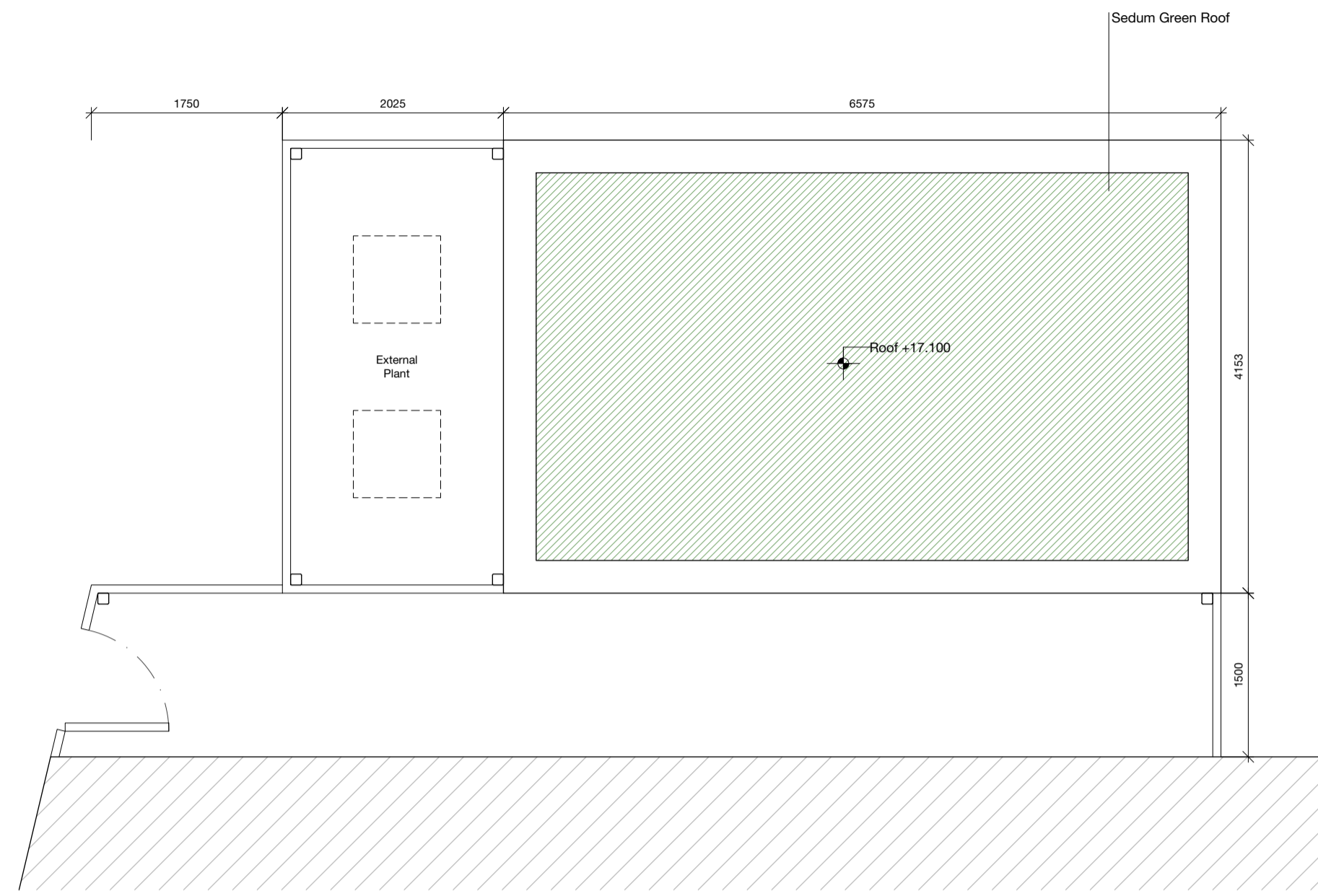
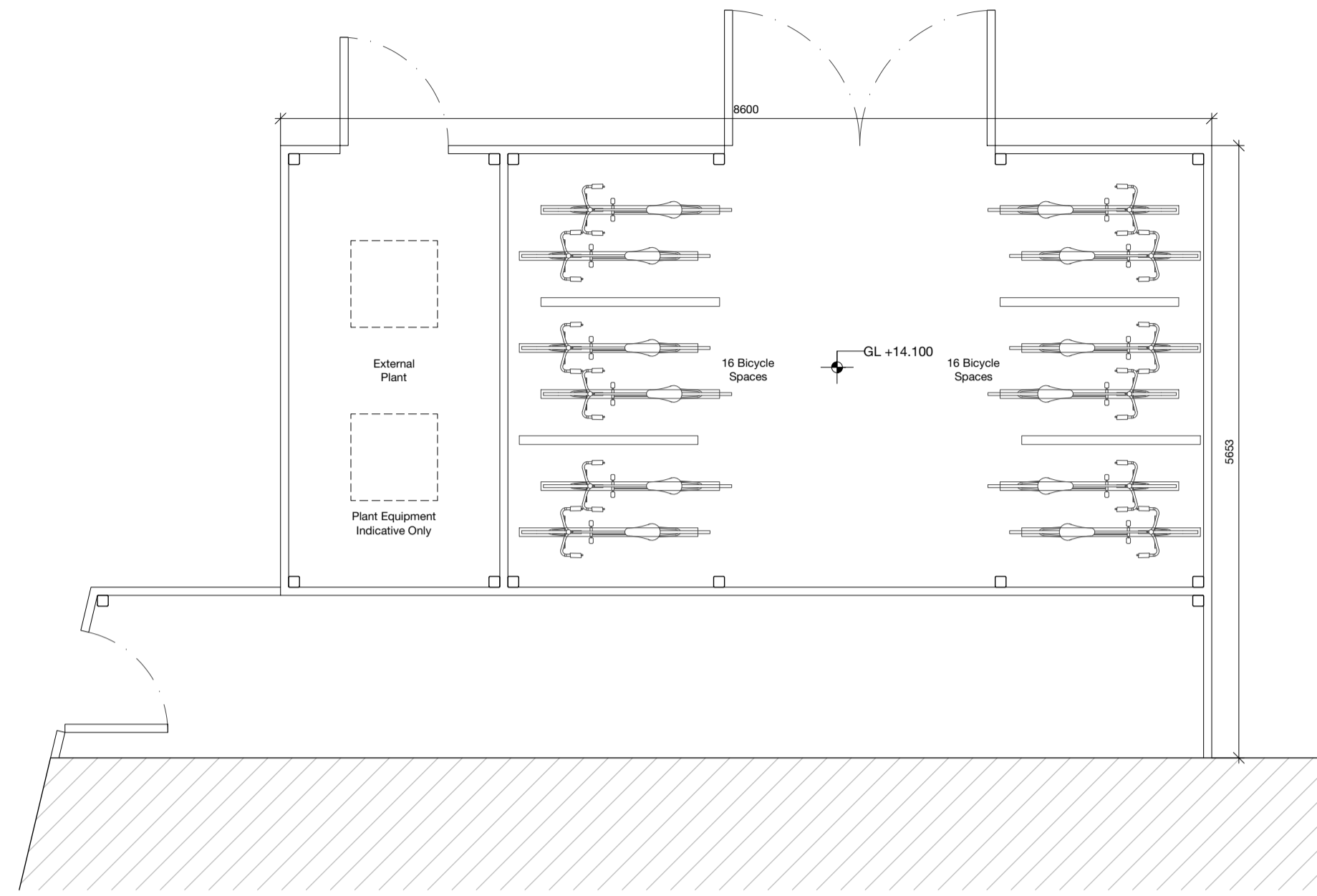


ANCILLARY STRUCTURES



Notes

Butler \ Cammoranesi architects
 6 George's Quay, Cork
 T +353 21 2417273 \ E info@butlercammoranesi.ie
 butlercammoranesi.ie



Project name
 Redforge Road SHD Residential Development

Project no
 19082

Client
 Bellmount Developments Limited

Drawing
 Ancillary Structures - Bicycle Store and External Plant

Series
 Planning

Scale
 1:50@A1

Drawing no.
 A90-01

Revision
 A

Date
 2021/09/03