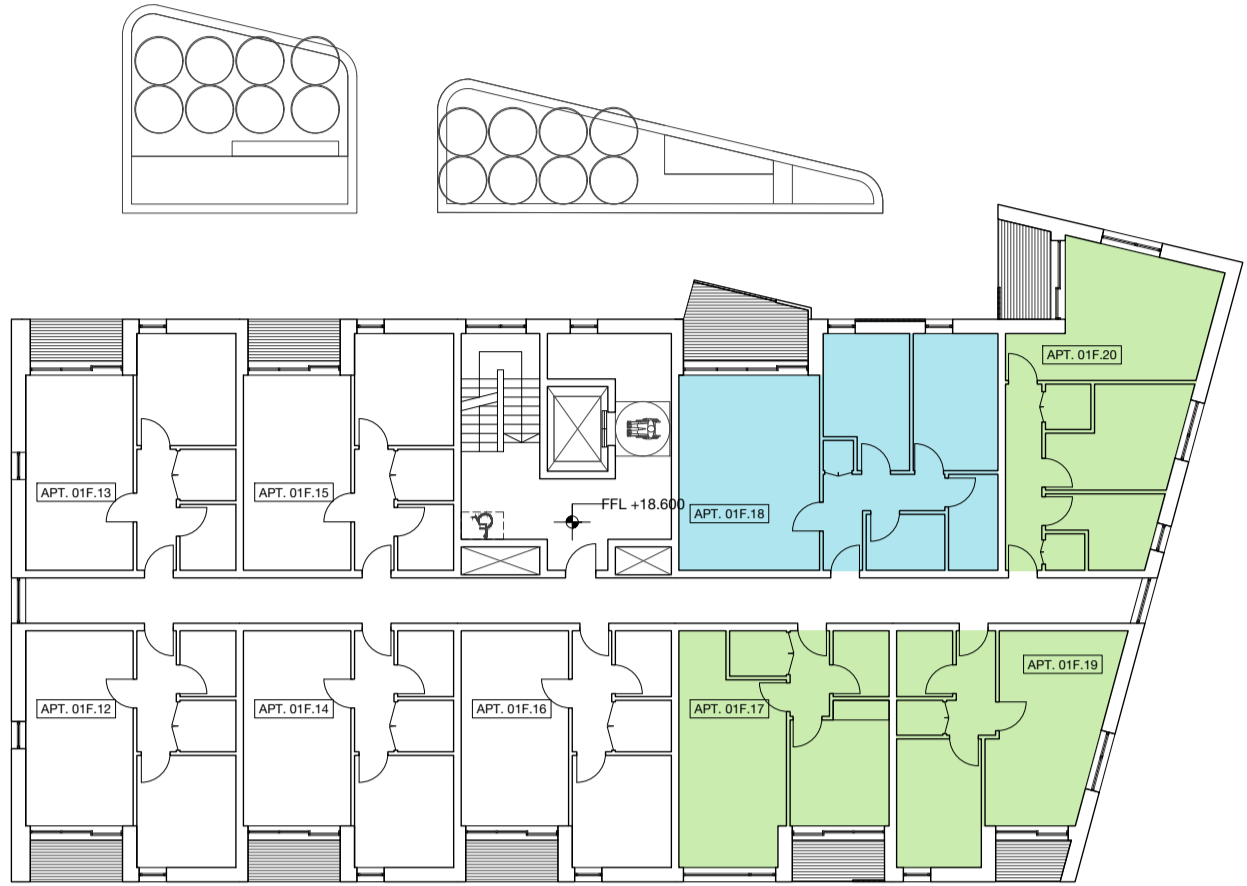
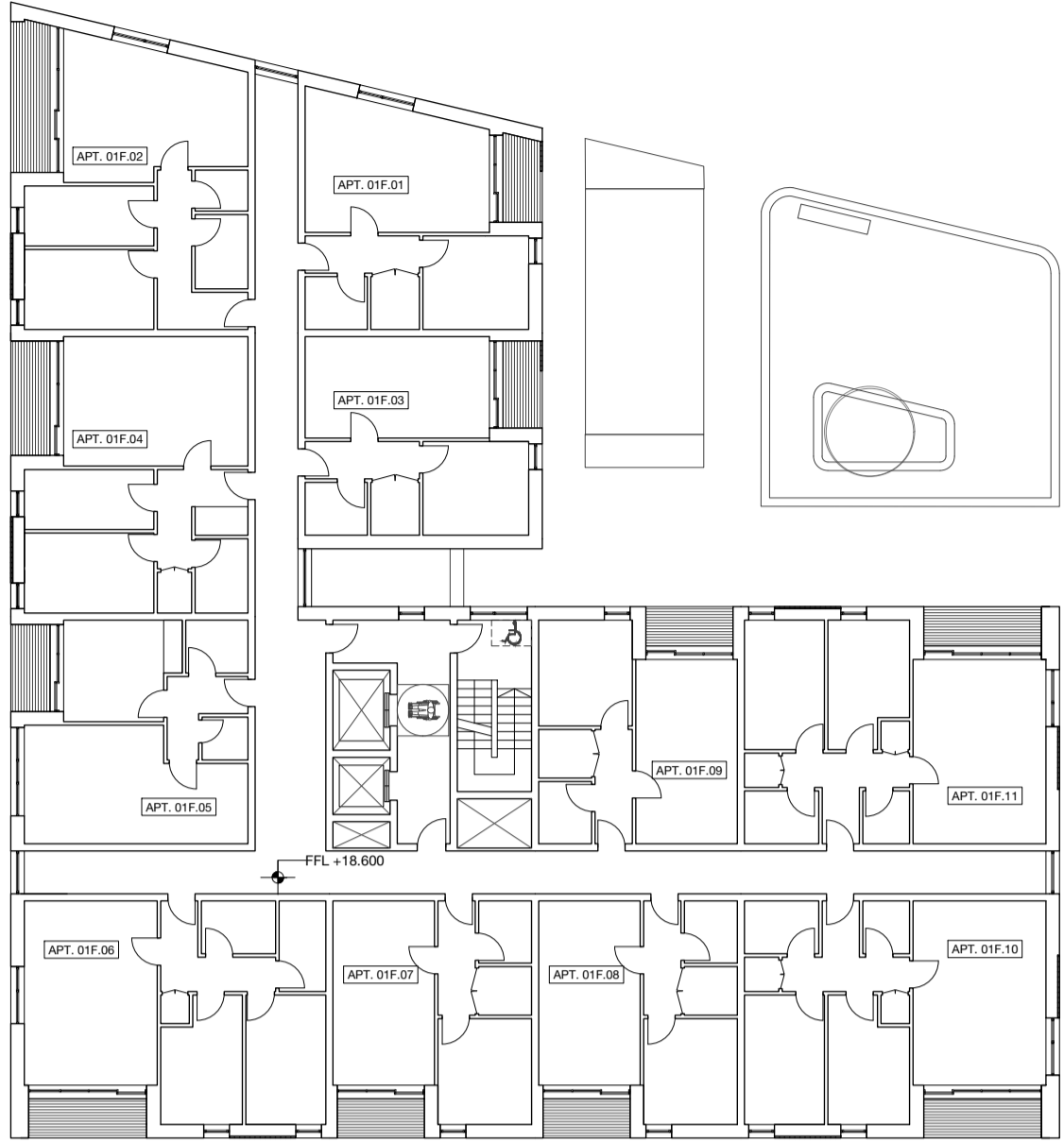
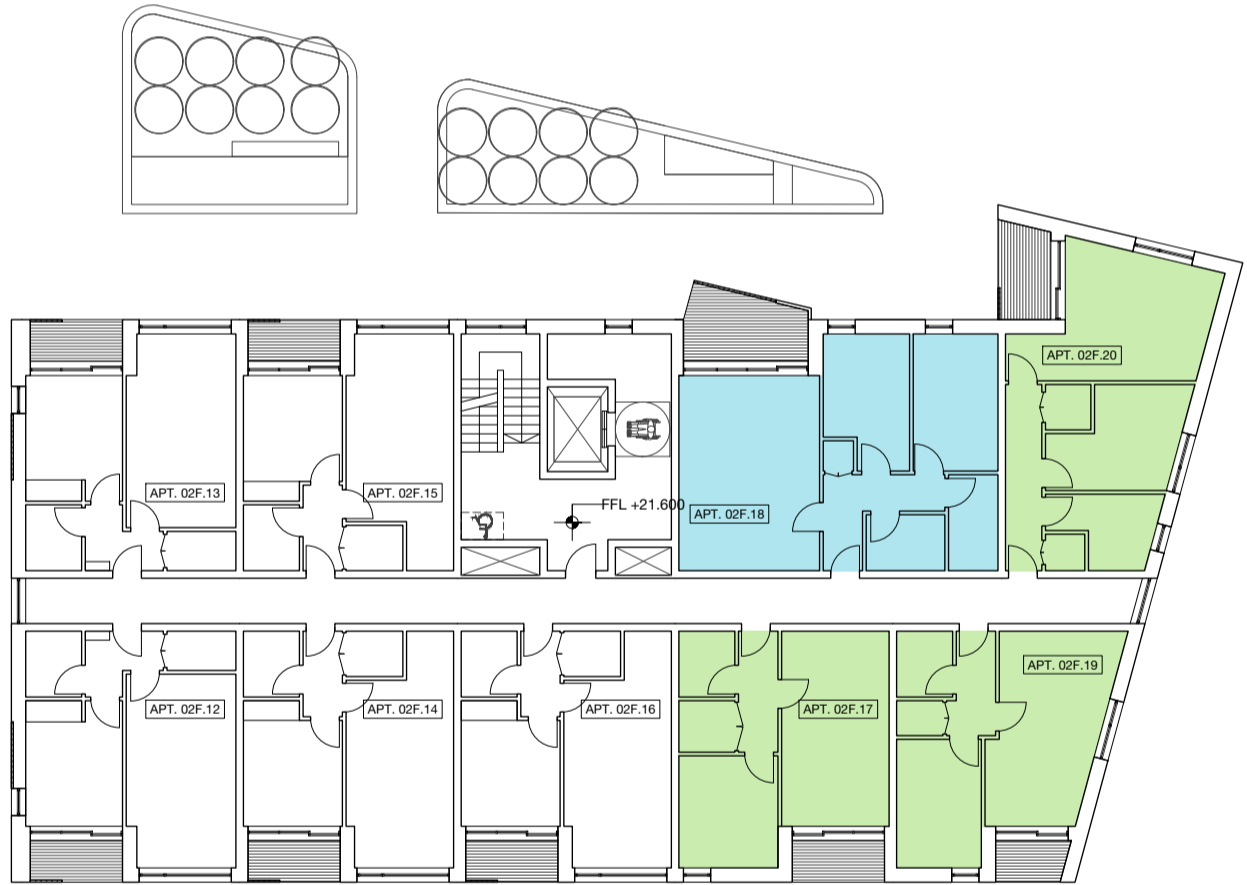
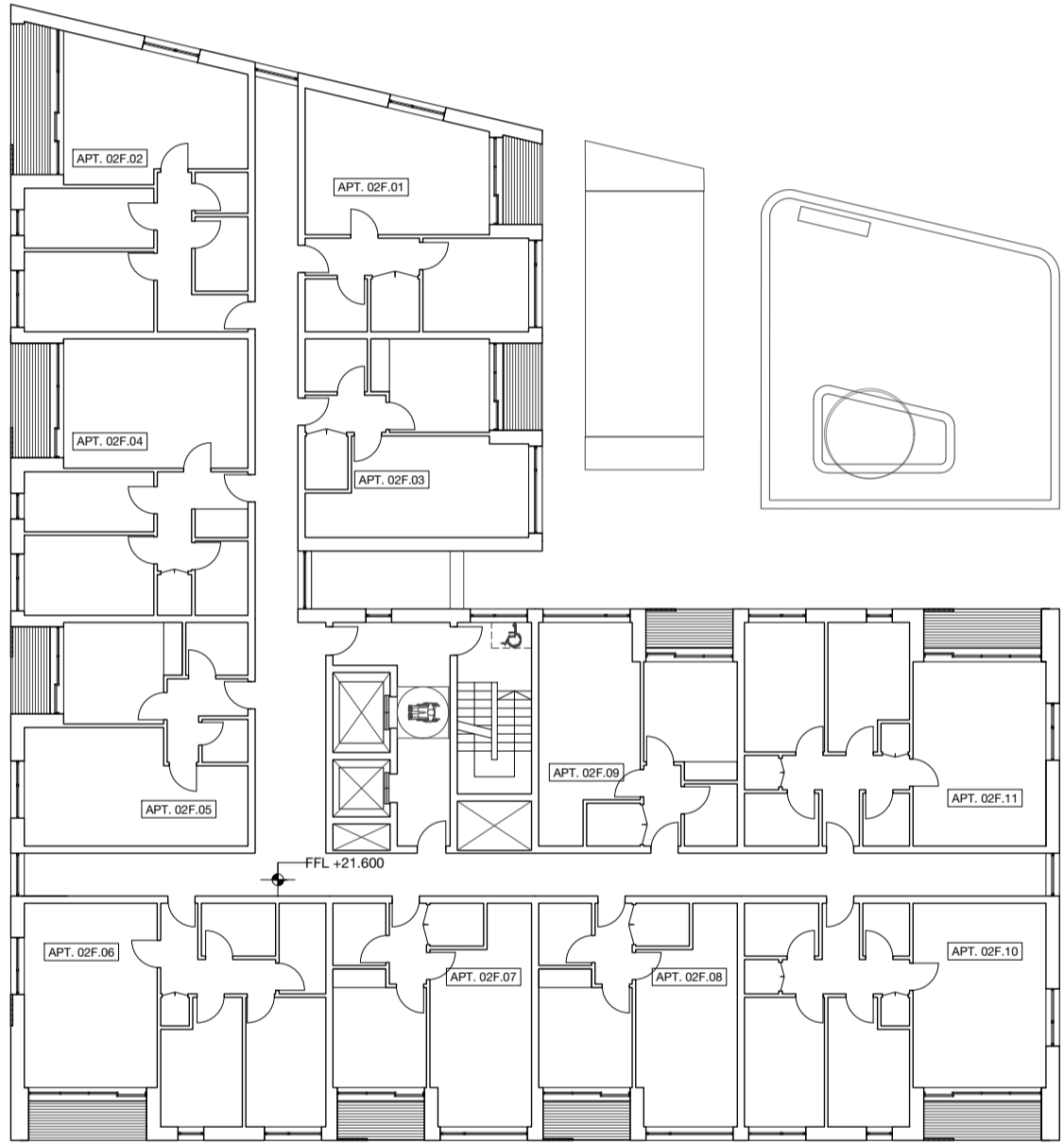


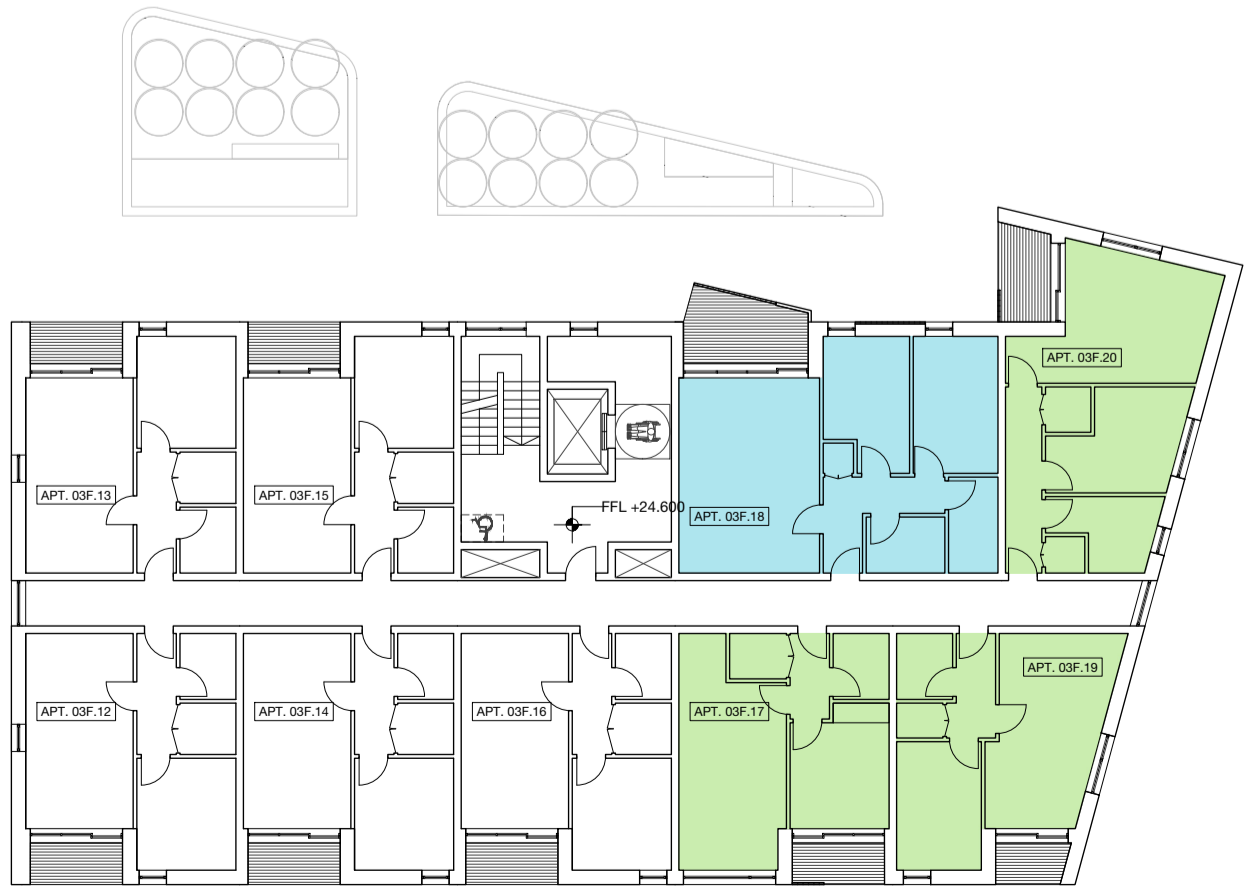
# PROPOSED PART V ALLOCATION



- First Floor Plan - 4no.
- APT. 01F.18 (Type M) - 76 sqm / (2 bed 4 person)
  - APT. 01F.17 (Type B) - 49 sqm / (1 bed)
  - APT. 01F.19 (Type G) - 58 sqm / (1 bed)
  - APT. 01F.20 (Type H) - 48 sqm / (1 bed)



- Second Floor Plan - 4no.
- APT. 02F.18 (Type M) - 76 sqm / (2 bed 4 person)
  - APT. 02F.17 (Type A) - 49 sqm / (1 bed)
  - APT. 02F.19 (Type G) - 58 sqm / (1 bed)
  - APT. 02F.20 (Type H) - 48 sqm / (1 bed)



- Third Floor Plan - 4no.
- APT. 03F.18 (Type M) - 76 sqm / (2 bed 4 person)
  - APT. 03F.17 (Type B) - 49 sqm / (1 bed)
  - APT. 03F.19 (Type G) - 58 sqm / (1 bed)
  - APT. 03F.20 (Type H) - 48 sqm / (1 bed)

PART V BREAKDOWN	
Part V Requirement	10%
Total Unit count	114
<b>Part V Unit Requirement</b>	<b>12</b>

PART V UNIT BREAKDOWN	
First Floor	4
Second Floor	4
Third Floor	4
<b>Total Part V Units</b>	<b>12</b>



Notes

**Butler \ Cammoranesi architects**  
 6 George's Quay, Cork  
 T +353 21 2417273 \ E info@butlercammoranesi.ie  
 butlercammoranesi.ie

**RIA** Registered Architect 2021

**Project name** Redforge Road SHD Residential Development **Project no** 19082

**Client** Bellmount Developments Limited

**Drawing** Proposed Part V Allocation **Series** Planning **Scale** 1:250BA1

**Drawing no.** A10-20 **Revision** A **Date** 2021/09/03